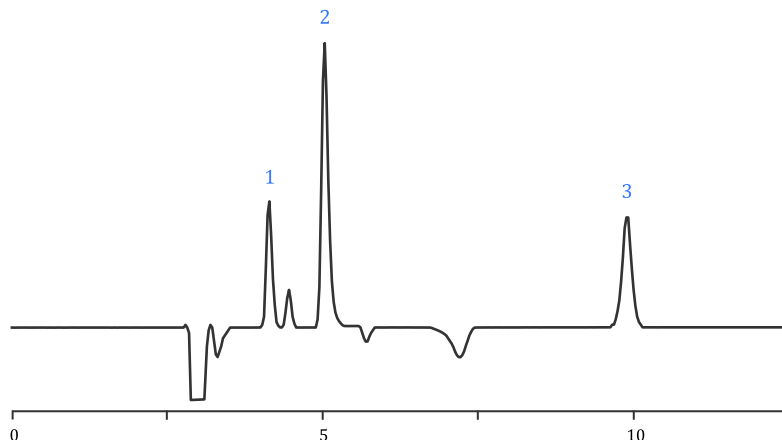


## Simultaneous Determination of Added Methionine, Threonine, and Lysine in Premixes Using Isocratic HPLC-RID

The method is intended for the isocratic determination of added methionine, threonine, and lysine in premixes using simple isocratic 400 bar HPLC system with a conventional RID detector.

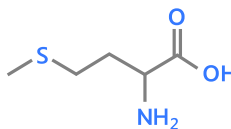
### Chromatogram

**Figure 1.** Isocratic determination of added methionine, threonine, and lysine in the premix sample #1. Detection: RID

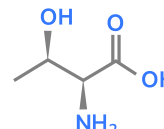


### Analytes

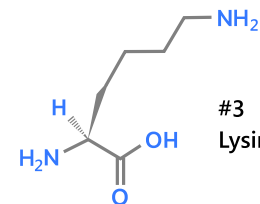
1. Methionine, 2. Threonine, 3. Lysine



#1  
Methionine



#2  
Threonine



#3  
Lysine